

Life Vision Healthcare

Sacubitril/Valsartan

50mg/100mg/200mg tablets

It is a medicine made from the combination of two anti-hypertensive drugs (sacubitril and valsartan) that reduce blood pressure. The medication is FDA-approved to treat patients with chronic heart failure with reduced ejection fraction (HFrEF) with NYHA class II, III, or IV.



Life Vision Healthcare

Sacubitril/ Valsartan

50mg/100mg/200mg tablets

Strength to the Heart
The modern solution

Sacubitril/valsartan is to be used in place of an angiotensin-converting enzyme inhibitor or angiotensin II receptor blocker and conjunction with other standard heart-failure treatments (beta-blocker, aldosterone antagonist).

New AHA/ACC/HFSA guidelines (2022) recommend using sacubitril-valsartan to manage patients with heart failure with preserved ejection fraction (HFpEF) ¹



1. Heidenreich PA, Bozkurt B, Aguilar D, Allen LA, Byun JJ, Colvin MM, Deswal A, Drazner MH, Dunlay SM, Evers LR, Fang JC, Fedson SE, Fonarow GC, Hayek SS, Hernandez AF, Khazanie P, Kittleson MM, Lee CS, Link MS, Milano CA, Nnacheta LC, Sandhu AT, Stevenson LW, Vardeny O, Vest AR, Yancy CW. 2022 AHA/ACC/HFSA Guideline for the Management of Heart Failure: A Report of the American College of Cardiology/American Heart Association Joint Committee on Clinical Practice Guidelines. Circulation. 2022 May 03;145(18)



Pathophysiology

Heart Failure

The pathophysiology of heart failure involves a maladaptive response during which the renin-angiotensin-aldosterone system (RAAS) is activated. RAAS activation leads to vasoconstriction, hypertension, increased aldosterone levels, increased sympathetic tone, and eventually, cardiac remodeling, all of which are detrimental to the progression of the disease.

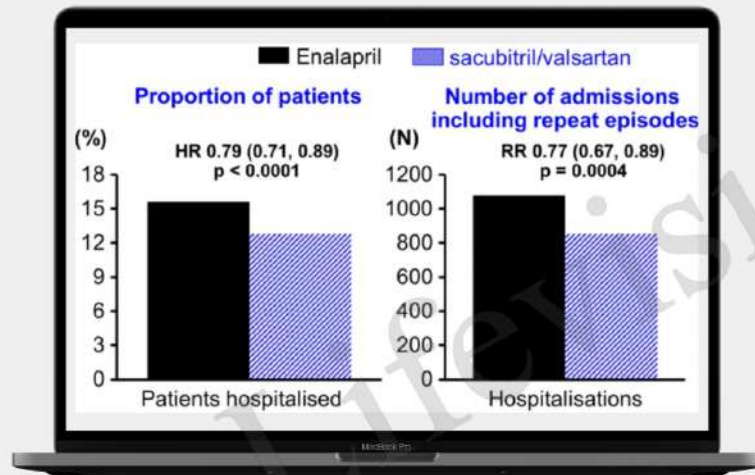
Early Management

ACEIs or ARBs play a major role in reducing morbidity and mortality due to heart failure by blocking these maladaptive elements²



Sacubitril/Valsartan

Strength to the Heart - The modern solution



Valsartan blocks the action of a hormone from the kidney called angiotensin II, which can be harmful in patients with heart failure, by blocking the receptors to which angiotensin II normally attaches. This effect stops the hormone's harmful effects on the heart, and it allows blood vessels to dilate or widen.

Sacubitril blocks the breakdown of natriuretic peptides produced in the body. Natriuretic peptides cause sodium and water to pass into the urine. This effect reduces the work on the heart and reduces blood pressure. The combined effect of the two medicines reduces the strain of the failing heart.



Life Vision Healthcare

Sacubitril/Valsartan

Strength to the Heart - The modern solution

Indications:

Sacubitril/valsartan has been shown to:

- a.Reduce hospitalizations for heart failure
- b.Improve survival.

Dosage:

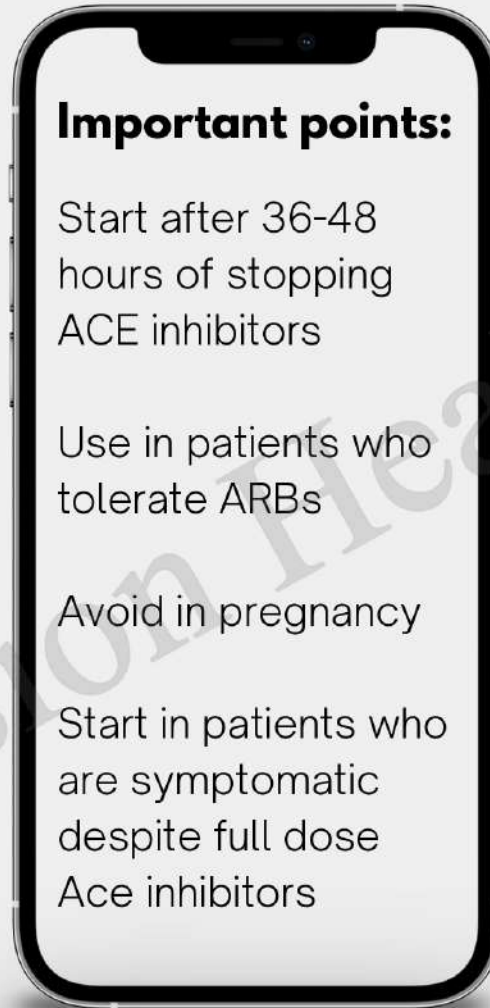
Recommended dose is 200 mg BD

Recommended starting dose is 100 mg BD



Sacubitril/ Valsartan

Strength to the Heart
The modern solution



Side effects:

Serious but rare: Angioedema

Common: Low BP, High potassium, Kidney function impairment

Concomittant use contraindicated:

ACE inhibitors

Concomittant use to be avoided:

ARBs

Concomittant use with caution:

Statins, Sildenafil, Lithium,
Potassium sparing diuretics,
Potaasium supplements

